

Proposed Expansion of the Williamstown-Lanesborough School Union 71

1

UNION 71 COMMITTEE MEETING JANUARY 19, 2010

**DAVE BACKUS
FEASIBILITY COMMITTEE**

Participants in Study

2

- The Feasibility Committee:
 - WES: Adam Filson, Dave Backus
 - LES: Sheila Hebert
 - MGRHS: Jack Hickey, Carrie Greene
 - Superintendents: Dr. Rose Ellis (Union 71), Dr. William Travis (MGRHS)
- Heather Williams and the MG Long Range Financial Planning Committee.
- Staffs of Union 71 & MGRHS

Successes of Union 71

3

- **Second year of operation:**
 - Lowered Admin costs for the elementary schools
 - Increased sharing/collaboration between WES/LES
 - Strengthened business support/alliances
 - Professional development
 - Purchasing and supplies
 - Long range educational planning
 - Partnering of PTOs & Town Rec Teams
- **Increased collaboration between Union schools and MGRHS:**
 - Math placement grade six to seven
 - Instrumental music preparation
 - Math, science & writing curriculum
 - First Time: 3 district PD (Jan '10)

Add MGRHS to School Union 71?

4

- **Timely:** Retirement of Bill Travis at MGRHS.
- **Opportune:** Create a more integrated relation between MGRHS and the feeder Elementary Schools.
- Provide even greater **economies of scale**.
- **Cost savings** to Elementary Schools.
- **Strengthen curricular support** to the MS & **Administrative support** to the HS.
- Unions of Elementary Schools and Regional MS/HS **common in state**.

New Positions in the Expanded School Union

5

- Superintendent
- Business Coordinator
- Special Education Director
- Special Education Coordinator
- .6 Curricular Coordinator Grades 5-9
- Administrative Assistant

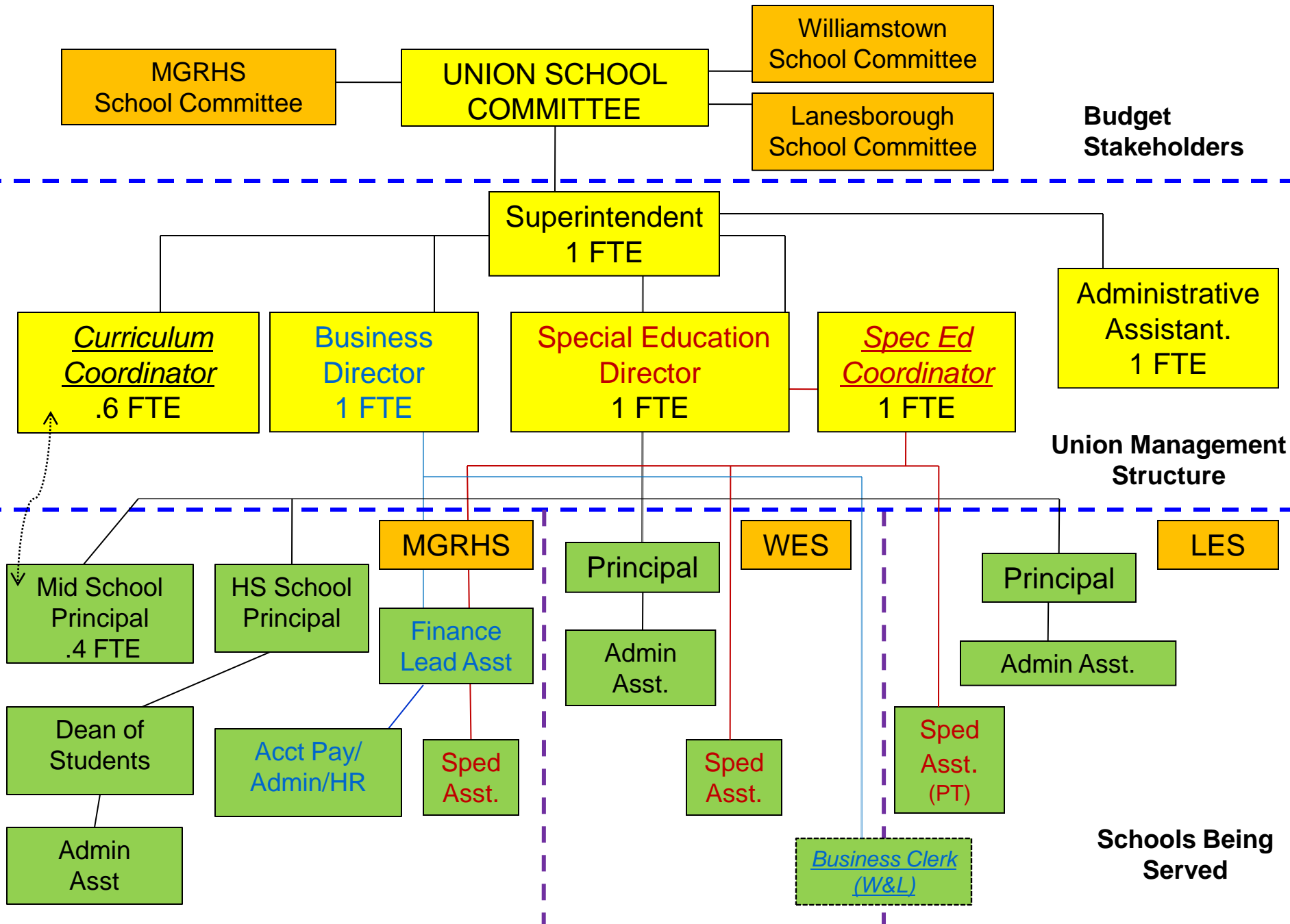
*LES & WES will share a Business Clerk

What Are the Benefits for District's Students?

6

- **Curricular Coordination:**
 - Curricular Coordinator position could expand to cover K - 12 over time. (Initial focus on grades 5-9)
- **At Risk Students :**
 - Identify in grade 5 for best service at MS & HS.
 - Curriculum Coordinator will be able to work with teachers from all schools to better focus on this population.
- **Transitions:**
 - The Curriculum Coordinator can focus on transitions from Elementary Schools to Middle School and from MS to HS.

PROPOSED EXPANDED SCHOOL UNION 71



Bottom Line Cost Analysis :

8

Mt. Greylock financial gain: \$6,000 – 48%

WES financial gain: \$36,500 – 32%

LES financial gain: \$20,500 – 20%

**Estimated financial savings in administration
for three schools: \$63,000**

Possible Union School Committee Structure:

9

Union/Regional School Committee

- Eight Person Committee (incl. Chairs from each SC)
 - 4 Representatives from MG School Committee
 - 2 residents of Williamstown
 - 2 residents of Lanesborough
 - 2 Representatives from WES School Committee
 - 2 Representatives from LES School Committee

Proposed Cost Sharing of Central Office Staff

48% MG

32% WES

20% LES

Apportionment Analysis

10

	Number of Students		
MGRHS	(647)	48%	5,826
WES	(427)	32%	36,522
LES	(270)	20%	20,605
	Number of Staff		
MGRHS	(105)	41%	45,985
WES	(94)	37%	7,837
LES	(56)	22%	9,131
	Average of Students & Staff		
MGRHS		45%	28,774
WES		34%	19,311
LES		21%	14,868

Changes to Special Education Department

11

- Special Education Director will continue to oversee all SPED student services, IEPs and Teams.
- All three schools will share a SPED Coordinator who will have authority to allocate services at each school.
- Each school will have an on-site Special Education Assistant to facilitate scheduling of staff and parent inquiries.

Analysis of Special Education Data

12

- DOE Website: Special Education Data for 2006
- Number of Students per District for **384** Districts: Voc, Agr, Charter (**0**) to (**7863**) Boston
- Average of **200** Students per District for **247** Districts:
(**25 to 500**) Special Ed. Students per District
- WES, LES and MGRHS combined have case load of **<200**.

Things to Consider for Union 71

13

- Superintendent, Business Director and Special Education Director will serve three schools from a centralized location at Mount Greylock Regional High School.
- Schools will need to work together to avoid stalemate votes on Union issues.
- Meetings between Superintendent & School Committees will need to be efficiently scheduled and run.
- WES & LES will be sharing administrative services with MGRHS and will need to expect less timely responses (in some cases) from Central Administration.